

2017 COLLECTION

BUSINESSWEAR / HOSPITALITYWEAR / CHEFSWEAR / BEAUTYWEAR



PREMIER®

BUSINESSWEAR

HOSPITALITYWEAR

CHEFSWEAR

BEAUTY & HEALTH

CONTENTS

THE COMPLETE COLLECTION

BUSINESSWEAR	6	-	49
SHIRTS & BLOUSES	8	-	23
KNITWEAR	24	-	29
TROUSERS	30	-	34
SECURITY	32	-	35
TIES & SCARVES	36	-	49
HOSPITALITYWEAR	50	-	101
SHIRTS & BLOUSES	52	-	66
TROUSERS	67	-	
WAISTCOATS	68	-	69
POLO-SHIRTS	70	-	75
APRONS	76	-	97
TABARDS	98	-	101
CHEFSWEAR	102	-	125
CHEF'S JACKETS	106	-	113
CHEF'S T-SHIRT	114	-	115
CHEF'S TROUSERS	116	-	117
CHEF'S ACCESSORIES	118	-	119
CHEF'S APRONS	120	-	125
BEAUTY & HEALTH	126	-	145
BEAUTY TUNICS	128	-	137
BEAUTY TABARD/APRONS	139	-	142
HEALTH TUNICS & TROUSERS	143	-	145
WHAT'S NEW	4	-	5
ETHICAL POLICY	146	-	
SIZE GUIDE	147	-	
WASH CARE	148	-	
INDEX	150	-	151



UNIFORMS

THAT WORK FOR YOU IN 2017



58-59
DENIM SHIRTS

60-61
CASUAL FRIDAY
SHIRTS



114-115
COOLCHECKER
CHEF'S T-SHIRT



78-79
DENIM APRONS

PREMIER CONTINUES TO LEAD THE WAY

with inspirational uniform choices for the workplace in 2017.

Our focus is on producing a collection that reflects the latest high-street fashions, whilst remaining practical for the job in hand. We design, manufacture and supply workwear for the business, hospitality, beauty and healthcare industries with all styles providing the perfect base for print and embroidery embellishment.

IN THE OFFICE

It's all about the collars and cuffs this year as we introduce four new shirts to the Businesswear collection. Take your trend on to another level with preppy gingham designs, iconic denims, fitted 'Friday Shirts' and cool roll-back styles. Why not elevate your look further with a super-trendy slim tie? Plain and patterned styles are available in up to forty colourways.



52-53
GINGHAM SHIRTS

36-41
NEW PATTERNED TIES



CREATING UNIFORMS
SINCE
1999



62-63
CROSS DYE SHIRTS

A TASTY CHOICE

Take a fresh look at our artisan-inspired Hospitalitywear collection where customers will start to see a more casual, organic approach to what we do. Checked cotton shirts and textured roll-sleeve styles are complemented by a dose of denim, with jeans stitch aprons set to be a popular choice.

Whist over in the kitchen, it's Premier's job to ensure that chef and the team are prepped and ready to go. The Premier chef's wear collection combines both practicality and style with traditional chef's whites giving way to more casual alternatives.

SALON CHIC

It's your time to shine with our stunning range of Beauty and Spa Tunics. Whether you're running a high street beauty salon or a specialist aesthetics clinic, a good dress code will help your staff radiate professionalism and instil confidence from your customers. For those in the healthcare professions, we offer a practical, yet stylish two-piece uniform solution available in the standard industry colours.

DRIVE YOUR STYLE

FROM 9 TO 5

BUSINESSWEAR

Ride out the working week in style with Premier's Corporatewear collection. We offer the complete solution for businesses who need to dress their teams in smart attire to convey a professional corporate image. Discover a collection of men's and ladies wear that is elegantly designed using quality fabrics and an abundance of colour. From Monday to Friday, we've got you covered!



CHECK MATE

GINGHAM STYLES FOR WORK & PLAY

MEN'S LONG SLEEVE

GINGHAM POPLIN SHIRT

PR220

- Soft collar styling
- Microcheck Gingham pattern
- Double buttons on the cuff
- Semi fitted shirt

FABRIC

100% Cotton
Weight: 115gsm

SIZES (Call size/Collar cm)

XS/36, S/39, M/40, L/42 XL/44, 2XL/46, 3XL/48

COLOUR

4 as listed opposite



LADIES' LONG SLEEVE

GINGHAM POPLIN SHIRT

PR320

- Soft collar styling
- Microcheck Gingham pattern
- Double buttons on the cuff
- Bust and back darts for a fitted shape

LADIES' SHORT SLEEVE

GINGHAM POPLIN SHIRT

PR321

- Soft collar styling
- Microcheck Gingham pattern
- Bust and back darts for a fitted shape

FABRIC

100% Cotton
Weight: 115gsm

SIZES

8/XS, 10/S, 12/M, 14/L, 16/XL, 18/2XL, 20/3XL

COLOUR

4 as listed opposite



**SEMI
FITTED**

PREMIER
UNIFORMS THAT WORK FOR YOU

GINGHAM

**NEW
STYLE**

PR220

PR320

PR321

SUPREME POPLIN



PR209



PR309

MEN'S SHORT SLEEVE SUPREME POPLIN SHIRT

PR209

- Offering a heavier fabric weight
- Formal collar styling
- Two button fastening on the collar stand
- Semi-fitted styling

FABRIC

65% Polyester, 35% Cotton
Weight: 125gsm

SIZES (collar) "/cm

14.5/37, 15/38, 15.5/40, 16/41, 16.5/42, 17/43, 17.5/45, 18/46, 18.5/47, 19/48

COLOUR

3 as listed below

LADIES' SHORT SLEEVE SUPREME POPLIN BLOUSE

PR309

- Offering a heavier fabric weight
- Soft collar styling
- Two button fastening on the collar stand
- Semi-fitted styling with back and bust darts

FABRIC

65% Polyester, 35% Cotton
Weight: 125gsm

SIZES

8/XS, 10/S, 12/M, 14/L, 16/XL, 18/2XL, 20/3XL, 22/4XL, 24/5XL, 26/6XL

COLOUR



HEAVIER POPLIN FABRIC •
SHAPED TO FIT •

BUSINESS HEAVY-WEIGHTS

MEN'S LONG SLEEVE SUPREME POPLIN SHIRT

PR207

- Offering a heavier fabric weight
- Formal collar styling
- Two button fastening on the collar stand
- Semi-fitted styling

FABRIC

65% Polyester, 35% Cotton
Weight: 125gsm

SIZES (collar) "/cm

14.5/37, 15/38, 15.5/40, 16/41, 16.5/42,
17/43, 17.5/45, 18/46, 18.5/47, 19/48

COLOUR

3 as listed



LADIES' LONG SLEEVE SUPREME POPLIN BLOUSE

PR307

- Offering a heavier fabric weight
- Soft collar styling
- Two button fastening on the collar stand
- Semi-fitted styling

FABRIC

65% Polyester, 35% Cotton
Weight: 125gsm

SIZES

8/XS, 10/S, 12/M, 14/L, 16/XL, 18/2XL, 20/3XL,
22/4XL, 24/5XL, 26/6XL

COLOUR

3 as listed



SUPREME POPLIN



Signature OXFORD

PR236

MEN'S SHORT SLEEVE OXFORD SHIRT

PR236

- Button down collar
- Left chest open Mitred pocket
- Semi-fitted styling
- Cotton rich Oxford fabric

FABRIC

70% Cotton, 30% Polyester
Weight: 135gsm

SIZES (collar) "/cm

14.5/37, 15/38, 15.5/40, 16/41, 16.5/42,
17/43, 17.5/45, 18/46, 18.5/47, 19/48

COLOUR

4 as listed

**SEMI
FITTED**

LADIES' SHORT SLEEVE OXFORD BLOUSE

PR336

- Soft collar styling
- Semi-fitted styling with bust and back darts
- Rounded bottom hem
- Cotton rich Oxford fabric

FABRIC

70% Cotton, 30% Polyester
Weight: 135gsm

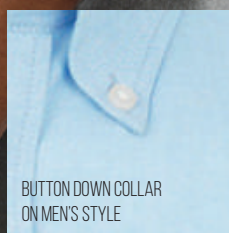
SIZES (collar)

8/XS, 10/S, 12/M, 14/L,
16/XL, 18/2XL, 20/3XL,
22/4XL, 24/5XL, 26/6XL

COLOUR

4 as listed

PR336



BUTTON DOWN COLLAR
ON MEN'S STYLE

Signature OXFORD

MEN'S LONG SLEEVE SIGNATURE OXFORD SHIRT

PR234

- Button down collar
- Left breast open Mitred pocket
- Semi-fitted styling
- Cotton rich Oxford fabric

FABRIC

70% Cotton, 30% Polyester
Weight: 135gsm

SIZES (collar) "/cm

14.5/37, 15/38, 15.5/40, 16/41, 16.5/42, 17/43, 17.5/45, 18/46, 18.5/47, 19/48

COLOUR

4 as listed

LADIES' LONG SLEEVE SIGNATURE OXFORD BLOUSE

PR334

- Soft collar styling
- Semi-fitted styling with bust and back darts
- Rounded bottom hem
- Cotton rich Oxford fabric

FABRIC

70% Cotton, 30% Polyester
Weight: 135gsm

SIZES

8/XS, 10/S, 12/M, 14/L, 16/XL, 18/2XL, 20/3XL, 22/4XL, 24/5XL, 26/6XL

COLOUR

4 as listed



**SEMI
FITTED**





PR202

PR302

STAND-OUT STYLE

30 COLOURS

PREMIER[®]
UNIFORMS THAT WORK FOR YOU

MEN'S SHORT SLEEVE POPLIN SHIRT

PR202

- Formal collar styling
- Left chest open Mitred pocket
- Self-coloured buttons
- Easycare

FABRIC

65% Polyester, 35% Cotton
Weight: 105gsm

SIZES (collar) "/cm

14.5/37, 15/38, 15.5/40, 16/41, 16.5/42,
17/43, 17.5/45, 18/46, 18.5/47, 19/48,
20/51, 21/53, 22/56,
(20", 21", 22" in Black & White only)

COLOUR

30 as listed

LADIES' SHORT SLEEVE POPLIN BLOUSE

PR302

- Soft collar styling
- Bust and back darts for a semi fitted appearance
- Rounded bottom hem
- Self-coloured buttons

FABRIC

65% Polyester, 35% Cotton
Weight: 105gsm / 115gsm White

SIZES

6/2XS, 8/XS, 10/S, 12/M, 14/L, 16/XL, 18/2XL,
20/3XL, 22/4XL, 24/5XL, 26/6XL

COLOUR

30 as listed

**CLASSIC
FIT**



A JOURNEY OF COLOUR

30 SHADES TO SUCCESS

MEN'S LONG SLEEVE POPLIN SHIRT

PR200

- Formal collar styling
- Left chest open Mitred pocket
- Double button fastening on the cuff
- Easycare

FABRIC

65% Polyester, 35% Cotton
Weight: 105gsm

SIZES (collar) "/cm

14.5/37, 15/38, 15.5/40, 16/41,
16.5/42, 17/43, 17.5/45, 18/46,
18.5/47, 19/48, 20/51, 21/53,
22/56, (20", 21", 22" in Black & White only)

COLOUR

30 as listed

LADIES' LONG SLEEVE POPLIN BLOUSE

PR300

- Soft collar styling
- Bust and back darts for a semi fitted appearance
- Rounded bottom hem
- Double buttons on the cuff

FABRIC

65% Polyester, 35% Cotton
Weight: 105gsm/ White 115gsm

SIZES

6/2XS, 8/XS, 10/S, 12/M, 14/L, 16/XL,
18/2XL, 20/3XL, 22/4XL, 24/5XL, 26/6XL

COLOUR

30 as listed

CLASSIC
FIT



30
COLOURS

PR305

LADIES' THREE QUARTER SLEEVE POPLIN BLOUSE

PR305

- Soft collar styling
- Three quarter sleeve with vented cuff
- Bust and back darts for a semi fitted appearance
- Rounded bottom hem

FABRIC

65% Polyester, 35% Cotton
Weight: 105gsm/115gsm White

SIZES

6/2XS, 8/XS, 10/S, 12/M, 14/L, 16/XL,
18/2XL, 20/3XL, 22/4XL, 24/5XL, 26/6XL
(Size 6 in Black & White only)

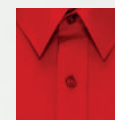
COLOUR

7 as listed



**CLASSIC
FIT**

FITTED POPLIN SHAPED TO FIT



Formal
cut collar



Double buttons
on cuff

P204



MEN'S LONG SLEEVE FITTED POPLIN SHIRT

PR204

- Formal collar styling
- Optional chest pocket attachment
- Double button fastening on the cuff
- Fitted style

FABRIC

65% Polyester, 35% Cotton
Weight: 105gsm

SIZES (collar) "/cm

14.5/37, 15/38, 15.5/40, 16/41,
16.5/42, 17/43, 17.5/45

COLOUR

8 as listed



**FITTED
STYLE**



MEN'S V-NECK KNITTED SWEATER

PR694

- Cotton rich long sleeve sweater
- V-neck styling
- Fine gauge knit
- Ribbed knit cuffs and hem

FABRIC

55% Cotton, 45% Acrylic
Weight: 12 gauge knit

SIZES

2XS, XS, S, M, L, XL, 2XL, 3XL, 4XL

COLOUR

8 as listed

LADIES' V-NECK KNITTED CARDIGAN

PR697

- Cotton rich ladies' cardigan
- V-neck styling
- Fine gauge knit
- Seven button fastening

FABRIC

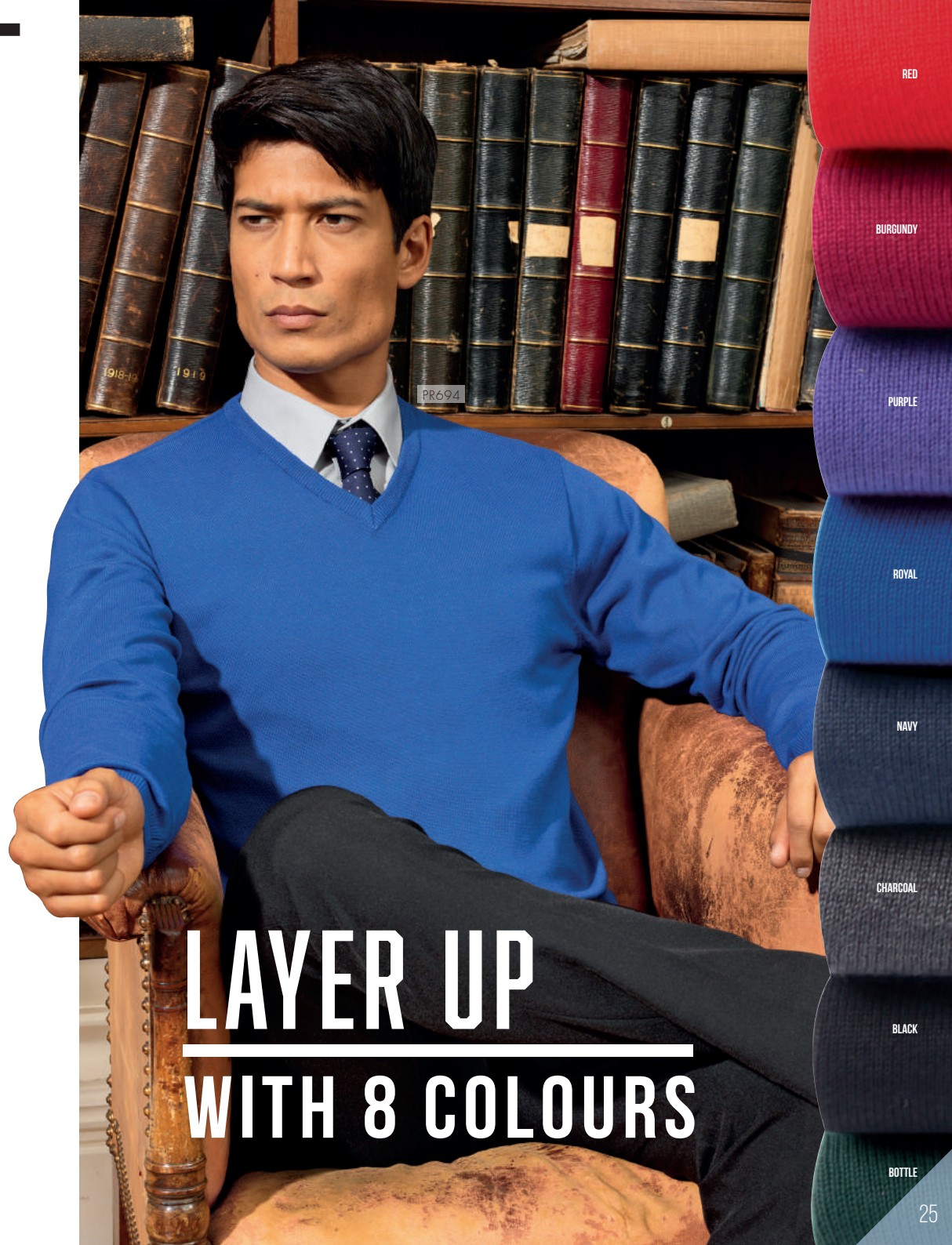
55% Cotton, 45% Acrylic
Weight: 12 gauge knit

SIZES

**8/XS, 10/S, 12/M, 14/L, 16/XL, 18/2XL,
20/3XL, 22/4XL, 24/5XL**

COLOUR

8 as listed



LAYER UP WITH 8 COLOURS

RED

BURGUNDY

PURPLE

ROYAL

NAVY

CHARCOAL

BLACK

BOTTLE



KNITWEAR

COTTON RICH STYLES



LADIES' V-NECK KNITTED SWEATER

PR696

- Cotton rich long sleeve sweater
- V-neck styling
- Fine gauge knit
- Ribbed knit cuffs and hem

FABRIC

55% Cotton, 45% Acrylic
Weight: 12 gauge knit

SIZES

**8/XS, 10/S, 12/M, 14/L,
16/XL, 18/2XL, 20/3XL,
22/4XL, 24/5XL,**

COLOUR

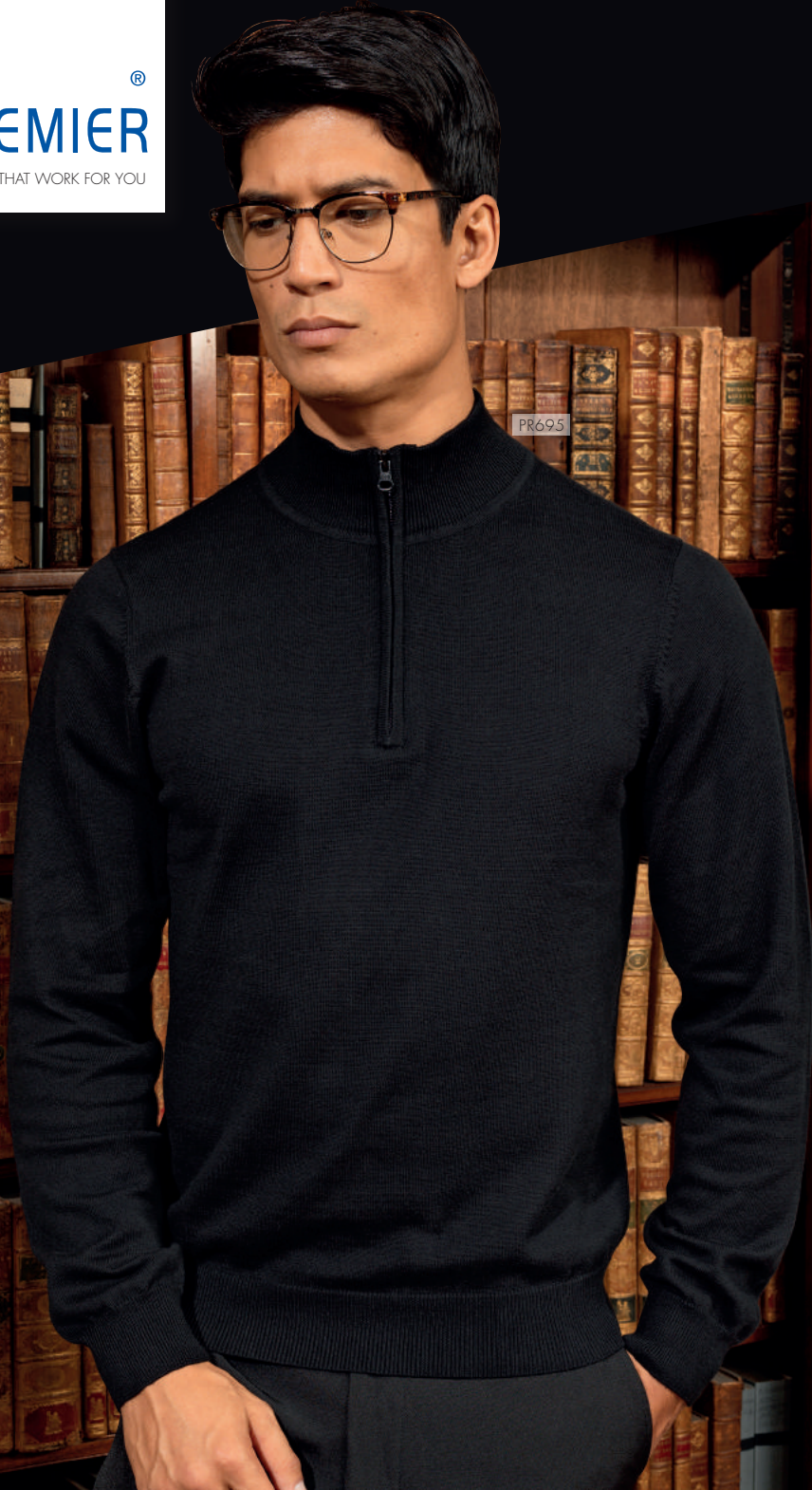
3 as listed



PR696

KNITWEAR

**NEW
STYLES**



MEN'S QUARTER ZIP KNITTED SWEATER

PR695

- Cotton rich long sleeve sweater
- Quarter zipped
- Fine gauge knit
- Ribbed knit collar, cuffs and hem

FABRIC

55% Cotton, 45% Acrylic
Weight: 12 gauge knit

SIZES

XS, S, M, L, XL, 2XL, 3XL, 4XL

COLOUR

3 as listed



LADIES' LONG LENGTH KNITTED CARDIGAN

PR698

- Cotton rich ladies' cardigan
- V-neck styling
- Seven button fastening
- Two front patch pockets



FABRIC

55% Cotton, 45% Acrylic
Weight: 12 gauge knit

SIZES

**8/XS, 10/S, 12/M, 14/L,
16/XL, 18/2XL, 20/3XL,
22/4XL, 24/5XL**

COLOUR

3 as listed



PR698



TAILORED FIT

PR526

STRAIGHT FIT

PR536

STRAIGHT FIT

PR520

BOOT CUT

PR530

SLIM FIT

PR528

TAPERED FIT

PR538

TROUSERS

MEN'S TAILORED TROUSERS

PR526

- Flat fronted trouser offering a more tailored fit
- YKK zip fly with button, hook 'n' bar fastening
- Two swing hip pockets
- Rear jetted pocket

FABRIC

100% Polyester
Weight: 185gsm

SIZES

30 - 44" / 76 - 110cm waist.
Regular leg 31"/79 cm and Long leg 34"/86 cm available

COLOUR



BLACK

LADIES' 'IRIS' STRAIGHT LEG TROUSER

PR536

- Trouser with a deep waistband
- YKK fastening zip
- Cross-over waistband with two button fastening
- No pockets

FABRIC

100% Polyester
Weight: 185gsm

SIZES

8 - 24 / XS-5XL
Regular leg 31"/79 cm and Long leg 34"/86 cm available

COLOUR



BLACK

MEN'S BUSINESS TROUSERS

PR520

- Single pleated front
- YKK zip fly with button, hook 'n' bar fastening
- Two swing hip pockets
- Rear jetted pocket

FABRIC

100% Polyester
Weight: 185gsm

SIZES

30 - 44" / 76 - 110cm waist.
Regular leg 31"/79 cm and Long leg 34"/86 cm available

COLOUR



BLACK



DARK NAVY

LADIES' BUSINESS TROUSERS

PR530

- Single pleated front
- YKK zip fly with button, hook 'n' bar fastening
- Boot cut style
- Belt loops

FABRIC

100% Polyester
Weight: 185gsm

SIZES

8 - 24 / XS-5XL
Regular leg 31"/79 cm and Long leg 34"/86 cm available

COLOUR



BLACK



DARK NAVY

MEN'S SLIM FIT POLYESTER TROUSERS

PR528

- Trouser offering a slimmer fit shape around the leg
- YKK zip fly with button, hook 'n' bar fastening
- Two swing hip pockets
- Rear jetted pocket

FABRIC

100% Polyester
Weight: 185gsm

SIZES

30 - 44" / 76 - 110cm waist.
Regular leg 31"/79 cm and Long leg 34"/86 cm available

COLOUR



BLACK

LADIES' TAPERED LEG TROUSER

PR538

- Tapered fit that follows the contours of the leg
- YKK fastening zip
- Cross-over waistband with two button fastening
- Two non-functional rear vented pockets for styling

FABRIC

100% Polyester
Weight: 185gsm

SIZES

8 - 24 / XS-5XL
Regular leg 31"/79 cm and Long leg 34"/86 cm available

COLOUR



BLACK



SECURITY

TAKE A CLOSER INSPECTION

MEN'S LONG SLEEVE

PILOT SHIRT

PR210

- Formal collar styling
- Two Mitred button down chest pockets
- Combined pen pocket on the left chest pocket
- Tabs for application of Epaulettes on the shoulders (page 34)

FABRIC

65% Polyester, 35% Cotton
Weight: 105gsm

SIZES (collar) "/cm

14.5/37, 15/38, 15.5/40, 16/41,
16.5/42, 17/43, 17.5/45, 18/46,
18.5/47, 19/48

COLOUR

3 as listed

CLASSIC
FIT

LADIES' LONG SLEEVE

PILOT SHIRT

PR310

- Formal collar styling
- Two Mitred button down breast pockets
- Combined pen pocket on the left breast pocket
- Tabs for application of Epaulettes on the shoulders (page 34)

FABRIC

65% Polyester, 35% Cotton
Weight: 115gsm

SIZES

8/XS, 10/S, 12/M, 14/L, 16/XL, 18/2XL,
20/3XL, 22/4XL, 24/5XL, 26/6XL

COLOUR



WHITE



PR310

PR210

LADIES' SECURITY TROUSERS

PR532

- Metal 'D' ring attached to the front belt loop
- YKK zip fly with button, hook 'n' bar fastening
- 'Bootcut' style
- Rear jetted pocket

FABRIC

100% Polyester
Weight: 215gsm

SIZES

8 - 24 / XS-5XL
Regular leg 31"/79cm and
Long leg 34"/86cm available

MEN'S SECURITY TROUSERS

PR523

- Metal 'D' ring attached to the front belt loop
- YKK zip fly with button, hook 'n' bar fastening
- Two swing hip pockets
- Rear jetted pocket

FABRIC

100% Polyester
Weight: 215gsm

SIZES

30 - 42" / 76 - 106cm waist
Regular leg 31"/79cm and
Long leg 34"/86cm

COLOUR



BLACK

WORK TIE

PR700

- Plain tie
- Length of 57"/144cm
- Blade width of 3.25"/8cm
- Clip-on version, PR710

FABRIC

100% Polyester
Wash: Wipe clean only

COLOUR

6 as listed

CLIP-ON WORK TIE

PR710

- Clip-on version of PR700
- Length of 20"/50cm
- Blade width of 3.25"/8cm
- Steel clip

FABRIC

100% Polyester
Wash: Wipe clean only

COLOUR

6 as listed



PR710

PR700

EPAULETTES

PR715

- Velcro fastening
- One size
- Embroidery area, 9cm x 5cm
- Complements PR700, PR710, PR711

FABRIC

100% Polyester
Wash: Wipe clean only



BLACK



NAVY

LADIES' CLIP-ON CRAVAT

PR711

- Steel clip attachment
- Complements PR710 Clip-on tie

FABRIC

100% Polyester
Wash: Wipe clean only

COLOUR

Black



LADIES' SHORT SLEEVE PILOT SHIRT

PR312

- Formal collar styling
- Two Mitred button down breast pockets
- Combined pen pocket on the left breast pocket
- Tabs for application of Epaulettes on the shoulders (page 34)

FABRIC

65% Polyester, 35% Cotton
Weight: 115gsm

SIZES

8/XS, 10/S, 12/M, 14/L, 16/XL, 18/2XL, 20/3XL, 22/4XL, 24/5XL, 26/6XL

COLOUR



BLACK



WHITE

MEN'S SHORT SLEEVE PILOT SHIRT

PR212

- Formal collar styling
- Two Mitred button down chest pockets
- Combined pen pocket on the left chest pocket
- Tabs for application of Epaulettes on the shoulders (page 34)

FABRIC

65% Polyester, 35% Cotton
Weight: 105gsm

SIZES (collar) "/cm

14.5/37, 15/38, 15.5/40, 16/41, 16.5/42, 17/43, 17.5/45, 18/46, 18.5/47, 19/48

COLOUR



BLACK



WHITE



LIGHT BLUE

CLASSIC
FIT

TIES & SCARVES

PR780, PR783, PR787

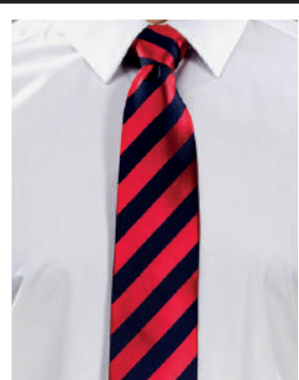
- Patterned tie
- Blade width of 3"/7.5cm
- Length of 57"/144cm

FABRIC

100% Polyester
Wash: Hand wash only

**PR783
WAFFLE STRIPE**





HOW DO YOU TIE YOURS?

6 STEPS TO CREATING THE PERFECT KNOT



STEP 1

Place tie around your neck with wide end hanging longer.



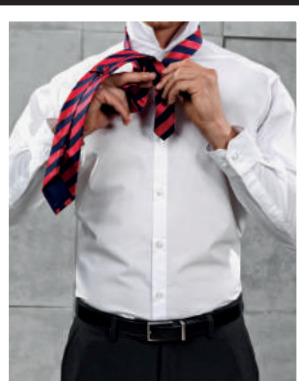
STEP 2

Cross the wide end over the narrow end.



STEP 3

Fold the wide end around the narrow end in a complete circle.



STEP 4

Pull the wide end up through the V-neck.



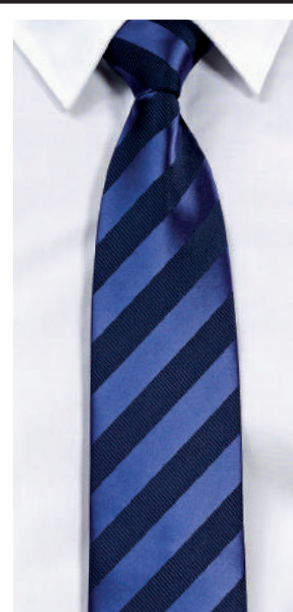
STEP 5

Tuck the wide end down into the loop created and gently pull through.



STEP 6

Whilst holding the narrow end with one hand, take the knot in the other hand and push it up to the collar, adjusting it in place.

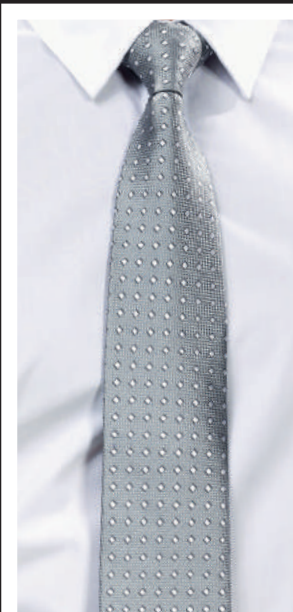


PR786
CLUB STRIPE

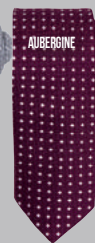


PR786, PR788, PR781

- Patterned tie
- Blade width of 3"/7.5cm
- Length of 57"/144cm



PR788
SQUARES

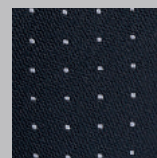


FABRIC

100% Polyester
Wash: Hand wash only



PR781
MICRO DOT





SLIM KNITTED TIE

PR789

- Blade width 2" / 5cm
- Length 58" / 147cm
- Hand wash only

FABRIC

100% Polyester

COLOUR

6 as listed

KNITTED

SLIM & STYLISH TIE



BLACK NAVY MID BLUE STEEL PURPLE RED

PR784 SPORTS STRIPE



PR782 DOUBLE STRIPE



PR782, PR784

- Patterned tie
- Blade width of 3" / 7.5cm
- Length of 57" / 144cm

FABRIC

100% Polyester
Wash: Hand wash only



SLIM KNITTED

**NEW
STYLE**



CANDY STRIPE TIE

PR766

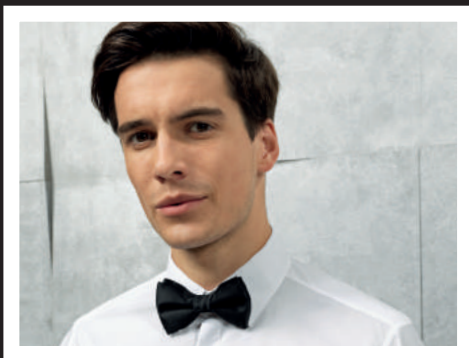
HORIZONTAL STRIPE TIE

PR722

- Patterned ties
- Length 57" / 144cm
- Blade width 4" / 10cm

FABRIC

100% Polyester
Wash: 30°C domestic wash



BOW TIE

PR705

- Satin weave bow tie
- Hook and bar fastening.

FABRIC

100% Polyester



SILK TIES

SILK TIE

PR795

- Luxurious silk tie
- Length 57" / 144cm
- Blade width 4" / 10cm

FABRIC

100% Silk twill

COLOURS

7 colours as listed



SLIM TIE



SLIM TIE

PR793

- Satin weave
- Blade width 2" / 5cm
- Length 58" / 147cm

FABRIC

100% Polyester

COLOURS

5 colours as listed



SCARVES & TIES

TIES

PR760/PR762

- Length 57" / 144cm
- Blade width 4" / 10cm

FABRIC

100% Polyester
Wash: Hand wash only

SCARVES

PR770/PR772

- Width 10" / 25cm
- Length 55" / 120cm

FABRIC

100% Polyester
Wash: Hand wash only

MULTI STRIPE

PR760/PR770



FOUR STRIPE

PR762/PR772



40
COLOURS

'COLOURS COLLECTION'

SATIN TIE

PR750

- Plain satin tie
- Blade width 3.34" / 8.5cm
- Length 57" / 144cm
- Clip-on version, PR755

FABRIC

100% Polyester
Wash: 30°C domestic wash

COLOURS

40 as listed below



CLIP-ON SATIN TIE

PR755

- Clip-on version of PR750
- Steel clip
- Blade width 3.34" / 8.5cm
- Length 20" / 50cm

FABRIC

100% Polyester
Wash: Hand wash only

COLOURS

40 as listed above

CHIC & SHEER

ADD A TOUCH OF ELEGANCE



'COLOURS COLLECTION' LADIES' CHIFFON SCARF

PR740

- Lightweight chiffon
- Width 6.5" / 16.5cm
- Length 38.5" / 98cm
- Complements PR750 men's tie

FABRIC

100% Polyester
Wash: Hand wash only

COLOURS

40 as listed above

40
COLOURS





'COLOURS'

ORIGINALS

'COLOURS COLLECTION' PLAIN BUSINESS SCARF

PR730

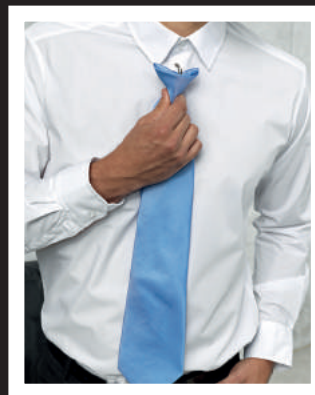
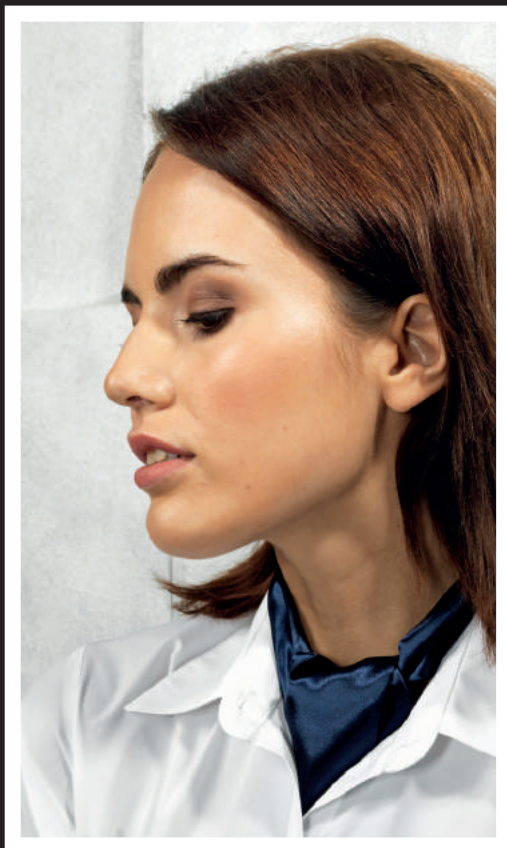
- Width 10"/25cm
- Length 55"/140cm
- Complements PR785 men's tie

FABRIC

100% Polyester
Wash: 30°C domestic wash

COLOURS

22 as listed



'COLOURS COLLECTION' CLIP-ON FASHION TIE

PR785

- Clip-on version
- Blade width 4"/10cm
- Length 18"/47cm

FABRIC

100% Polyester
Wash: Hand wash only

COLOURS

18 as listed

'COLOURS COLLECTION' FASHION TIE

PR765

- Tie offering a more matt appearance in comparison to PR750
- Blade width 4"/10cm
- Length 57"/144cm

FABRIC

100% Polyester
Wash: 30°C domestic wash

COLOURS

18 as listed



SERVICE

RE-INVENTED

Your menu is ever changing to reflect the produce of the season and so too should your staff uniform. Discover preppy Gingham check shirts and vintage denim styles that will give your establishment a fresh wholesome feel.



CHECK INTO STYLE

MEN'S LONG SLEEVE GINGHAM POPLIN SHIRT

PR220

- Soft collar styling
- Microcheck Gingham pattern
- Double buttons on the cuff
- Semi fitted shirt

FABRIC

100% Cotton
Weight: 115gsm

SIZES (Call size/Collar cm)

XS/36, **S**/39, **M**/40, **L**/42 **XL**/44, **2XL**/46, **3XL**/48

COLOUR

4 as listed opposite

LADIES' LONG SLEEVE GINGHAM POPLIN SHIRT

PR320

- Soft collar styling
- Microcheck Gingham pattern
- Double buttons on the cuff
- Bust and back darts for a fitted shape

LADIES' SHORT SLEEVE GINGHAM POPLIN SHIRT

PR321

- Soft collar styling
- Microcheck Gingham pattern
- Bust and back darts for a fitted shape

FABRIC

100% Cotton
Weight: 115gsm

SIZES

8/XS, **10**/S, **12**/M, **14**/L, **16**/XL, **18**/2XL, **20**/3XL

COLOUR

4 as listed opposite





PR202

PR302



PREMIER
UNIFORMS THAT WORK FOR YOU

30 SHADES

MEN'S SHORT SLEEVE POPLIN SHIRT

PR202

- Formal collar styling
- Left chest open Mitred pocket
- Self-coloured buttons
- Easycare

FABRIC

65% Polyester, 35% Cotton
Weight: 105gsm

SIZES (collar) " /cm

14.5/37, 15/38, 15.5/40, 16/41,
16.5/42, 17/43, 17.5/45, 18/46,
18.5/47, 19/48, 20/51, 21/53,
22/56,
(20", 21", 22" in Black & White only)

COLOUR

30 as listed

LADIES' SHORT SLEEVE POPLIN BLOUSE

PR302

- Soft collar styling
- Bust and back darts for a semi fitted appearance
- Rounded bottom hem
- Self-coloured buttons

FABRIC

65% Polyester, 35% Cotton
Weight: 105gsm / 115gsm White

SIZES

6/2XS, 8/XS, 10/S, 12/M, 14/L, 16/XL, 18/2XL,
20/3XL, 22/4XL, 24/5XL, 26/6XL

COLOUR

30 as listed

**CLASSIC
FIT**



POPLIN

MEN'S LONG SLEEVE POPLIN SHIRT

PR200

- Formal collar styling
- Left chest open Mitred pocket
- Double button fastening on the cuff
- Easycare

FABRIC

65% Polyester, 35% Cotton
Weight: 105gsm

SIZES (collar) "/cm

14.5/37, 15/38, 15.5/40, 16/41,
16.5/42, 17/43, 17.5/45, 18/46,
18.5/47, 19/48, 20/51, 21/53,
22/56, (20", 21", 22" in Black & White only)

COLOUR

30 as listed

LADIES' LONG SLEEVE POPLIN BLOUSE

PR300

- Soft collar styling
- Bust and back darts for a semi fitted appearance
- Rounded bottom hem
- Double buttons on the cuff

FABRIC

65% Polyester, 35% Cotton
Weight: 105gsm/ White 115gsm

SIZES

6/2XS, 8/XS, 10/S, 12/M, 14/L, 16/XL,
18/2XL, 20/3XL, 22/4XL, 24/5XL, 26/6XL

COLOUR

30 as listed

**CLASSIC
FIT**

**30
COLOURS**

PR200

PR300



MEN'S JEANS STITCH DENIM SHIRT

PR222

- Contrast stitch details
- Left chest button down pocket
- Buttoned cuff and sleeve guard for roll back option on the lower arm

FABRIC

100% Ringspun Cotton Denim
Weight: 155gsm
Wash: 40°C domestic wash

SIZES

XS, S, M, L, XL, 2XL, 3XL

COLOUR

2 as listed

LADIES' JEANS STITCH DENIM SHIRT

PR322

- Contrast stitch details
- Two button down breast pockets
- Buttoned cuff and sleeve guard for roll back option on the lower arm

FABRIC

100% Ringspun Cotton Denim
Weight: 155gsm
Wash: 40°C domestic wash

SIZES

**8/XS, 10/S, 12/M, 14/L, 16/XL,
18/2XL, 20/3XL**

COLOUR

2 as listed

**SEMI
FITTED**



**HOSPITALITY
IT'S IN THE JEANS**

DENIM

**NEW
STYLE**

MEN'S LONG SLEEVE FITTED 'FRIDAY SHIRT'

PR214

- Soft collar styling
- Contrast fabric tape on the inside collar stand
- Buttoned cuff and sleeve guard for roll back option on the lower arm
- Fitted shirt

FABRIC

65% Polyester, 35% Cotton
Weight: 105gsm

SIZES (Call size/Collar cm)

XS/36, **S**/39, **M**/40, **L**/42 **XL**/44, **2XL**/46

COLOUR

2 as listed

LADIES' LONG SLEEVE FITTED 'FRIDAY SHIRT'

PR314

- Soft collar styling
- Contrast fabric tape on the inside collar stand
- Buttoned cuff and sleeve guard for roll back option on the lower arm
- Fitted shirt with bust and back darts

FABRIC

65% Polyester, 35% Cotton
Weight: 105gsm

SIZES (Call size)

XS/8, **S**/10, **M**/12, **L**/14 **XL**/16, **2XL**/18

COLOUR

2 as listed



• SOFT COLLAR
• TRIM DETAIL

FITTED
STYLE

KEEP IT CASUAL
WITH THE ALL NEW FRIDAY SHIRT

PR214

PR314

CROSS-DYE

NEW
STYLE

PR217

PR317

CROSS-DYE

POPLIN SHIRTS

MEN'S ROLL SLEEVE 'CROSS DYE' POPLIN SHIRT

PR217

- Soft collar styling
- Cross dye textured fabric appearance
- Long sleeve option with two button fastening on the cuff
- Roll-up sleeve option with button fastening on the upper arm

FABRIC

65% Polyester, 35% Cotton
Weight: 105gsm

SIZES (Call size/Collar cm)

XS/36, **S**/39, **M**/40, **L**/42 **XL**/44, **2XL**/46, **3XL**/48

COLOUR

2 as listed

LADIES' ROLL SLEEVE 'CROSS DYE' POPLIN SHIRT

PR317

- Soft collar styling
- Cross dye textured fabric appearance
- Long sleeve option with two button fastening on the cuff
- Roll-up sleeve option with button fastening on the upper arm

FABRIC

65% Polyester, 35% Cotton
Weight: 105gsm

SIZES

8/XS, **10**/S, **12**/M, **14**/L, **16**/XL,
18/2XL, **20**/3XL

COLOUR

2 as listed

**SEMI
FITTED**

PREMIER
UNIFORMS THAT WORK FOR YOU



• ROLL UP SLEEVE
• BUTTON FASTENING

ROLL-BACK IN STYLE

PR206

PR306

MEN'S ROLL SLEEVE POPLIN SHIRT

PR206

- Single button cuff fastening
- Button and tab on upper arm to secure rolled sleeve in place
- Left chest vented pocket
- Soft collar styling

FABRIC

65% Polyester, 35% Cotton
Weight: 105gsm

SIZES

S, M, L, XL, 2XL

COLOUR

1 colours as listed

LADIES' ROLL SLEEVE POPLIN SHIRT

PR306

- Bust and back darts
- Button and tab on upper arm to secure rolled sleeve in place
- Left chest vented pocket
- Soft collar styling

FABRIC

65% Polyester, 35% Cotton
Weight: 105gsm

SIZES

XS, S, M, L, XL, 2XL

COLOUR

1 colour as listed

**CLASSIC
FIT**



LADIES' THREE QUARTER SLEEVE POPLIN BLOUSE

PR305

- Soft collar styling
- Three quarter sleeve with vented cuff
- Bust and back darts for a semi fitted appearance
- Rounded bottom hem

FABRIC

65% Polyester, 35% Cotton
Weight: 105gsm/115gsm VWhite

SIZES

6/2XS, 8/XS, 10/S, 12/M, 14/L, 16/XL,
18/2XL, 20/3XL, 22/4XL, 24/5XL, 26/6XL
(Size 6 in Black & White only)

COLOUR

7 as listed



PR305



HOSPITALITY TROUSERS

LADIES' FLAT FRONT TROUSERS

PR532

- Metal 'D' ring attached to the waist band
- YKK zip fly with button, hook 'n' bar fastening
- 'Bootcut' style
- Rear jetted pocket

FABRIC

100% Polyester
Weight: 215gsm

SIZES

8 - 24 / XS-5XL
Regular leg 31"/79cm and
Long leg 34"/86cm available

COLOUR

Black

MEN'S FLAT FRONT TROUSERS

PR523

- Metal 'D' ring attached to the front belt loop
- YKK zip fly with button, hook 'n' bar fastening
- Two swing hip pockets
- Rear jetted pocket

FABRIC

100% Polyester
Weight: 215gsm

SIZES

30 - 42" / 76 - 106cm waist
Regular leg 31"/79cm and
Long leg 34"/86cm

COLOUR

Black



PR620

PR621

MEN'S LINED POLYESTER WAISTCOAT

PR622

- Satin back
- Two functional watch pockets
- Five button fastening
- Back adjuster

FABRIC

100% Polyester
Weight: 185gsm

SIZES

2XS, XS, S, M, L, XL, 2XL

COLOUR

1 as listed

LADIES' LINED POLYESTER WAISTCOAT

PR623

- Satin back
- Two functional watch pockets
- Four button fastening
- Back adjuster

FABRIC

100% Polyester
Weight: 185gsm

SIZES

2XS, XS, S, M, L, XL, 2XL

COLOUR

1 as listed

WAISTCOATS

SERVICE READY

MEN'S HOSPITALITY WAISTCOAT

PR620

- Self-fabric back
- Two functional watch pockets
- Five button fastening
- Easycare

FABRIC

65% Polyester, 35% Cotton
Weight: 195gsm

SIZES

S, M, L, XL, 2XL

COLOUR

1 as listed

LADIES' HOSPITALITY WAISTCOAT

PR621

- Self-fabric back
- Two functional watch pockets
- Four button fastening
- Easycare

FABRIC

65% Polyester, 35% Cotton
Weight: 195gsm

SIZES

S, M, L, XL, 2XL

COLOUR

1 as listed



PR622

PR623

COOL[®]
CHECKER

POLO SHIRTS

MEN'S COOLCHECKER PIQUE POLO

PR615

- Side panels for fitted shape
- Ribbed knit collar
- Three button placket
- Moisture management properties

FABRIC

100% Polyester pique knit
Weight: 155gsm

SIZES

**S/35", M/37", L/39", XL/41", 2XL/44",
3XL/46", 4XL/48", *5XL/51"**
(*5XL only available in highlighted colours)

COLOUR

18 as listed opposite

LADIES' COOLCHECKER PIQUE POLO

PR616

- Side panels for fitted shape
- Ribbed knit collar
- Three button placket
- Moisture management properties

FABRIC

100% Polyester pique knit
Weight: 155gsm

SIZES

**8/XS, 10/S, 12/M, 14/L, 16/XL,
18/2XL**

COLOUR

18 as listed opposite



STRAWBERRY RED

BURGUNDY

* RED

AUBERGINE

HOT PINK

PURPLE

* NAVY

* ROYAL

SAPPHIRE

TURQUOISE

LIGHT BLUE

LIME

* WHITE

BOTTLE

* SILVER

* DARK GREY

BROWN

* BLACK

18
COLOURS

CONTRAST

NEW
STYLE

PR618

PR619

RED/BLACK

BLACK/RED

BLACK/ORANGE

BLACK/SUNFLOWER

BLACK/LIME

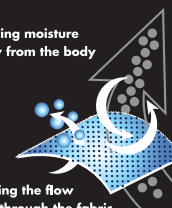
DARK GREY/WHITE

BLACK/TURQUOISE

ROYAL/WHITE

COOL
CHECKER®

Drawing moisture
away from the body



Allowing the flow
of air through the fabric,
fast dry and crease resistant.

PREMIER
UNIFORMS THAT WORK FOR YOU

CONTRAST POLO

MEN'S CONTRAST TIPPED COOLCHECKER POLO

PR618

- Side panels for fitted shape
- Ribbed knit collar and cuffs
- Three button placket
- Contrast trim on collar, placket and sleeves

FABRIC

100% Polyester pique knit
Weight: 155gsm

SIZES

**S/35", M/37", L/39", XL/41", 2XL/44",
3XL/46"**

COLOUR

8 as listed

LADIES' CONTRAST TIPPED COOLCHECKER POLO

PR619

- Side panels for fitted shape
- Ribbed knit collar and cuffs
- Three button placket
- Contrast trim on collar, placket and sleeves

FABRIC

100% Polyester pique knit
Weight: 155gsm

SIZES

**8/XS, 10/S, 12/M, 14/L, 16/XL,
18/2XL**

COLOUR

8 as listed



**COOL[®]
CHECKER**

**MEN'S LONG SLEEVE
COOLCHECKER
PIQUE POLO**

PR617

- Three button placket
- Side panels for a fitted shape
- Moisture management wicking properties
- Ribbed knit collar and cuffs

FABRIC
100% Polyester Pique
Weight: 155gsm
Wash: 40°C domestic wash

SIZES
XS, S, M, L, XL, 2XL, 3XL, 4XL

COLOUR
2 as listed

PR610

MEN'S STUDDED POLO

PR610

- Three pop stud placket
- Extra body length
- Durable pique knit construction
- Ribbed knit collar

FABRIC

65% Polyester, 35% Cotton
Weight: 200gsm
Wash: 50°C domestic wash

SIZES

S, M, L, XL, 2XL, 3XL

COLOUR

4 as listed



SNAPPY STYLES

COOLCHECKER STUDDED POLO

PR612

- Two pop stud fastening on the placket
- Extra body length
- Moisture management wicking properties
- Self-fabric collar

FABRIC

100% Polyester Pique
Weight: 140gsm
Wash: 60°C domestic wash

SIZES

XS, S, M, L, XL, 2XL, 3XL

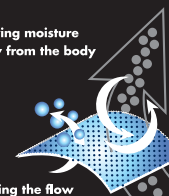
COLOUR

9 as listed



**COOL[®]
CHECKER[®]**

Drawing moisture
away from the body



Allowing the flow
of air through the fabric,
fast dry and crease resistant.

**9
COLOURS**



60 SUMPTUOUS APRONS

WITH 4 CLASSIC SHADES OF DENIM

'COLOURS COLLECTION' BIB APRON

PR150

- Bib apron offering good coverage
- Adjustable buckle on neckband
- Self-fabric ties
- Length of 86cm and width of 72cm

FABRIC

65% Polyester, 35% Cotton.

Weight: 195gsm

Denim designs are 70% Cotton, 30% Polyester

Denim designs are 265gsm

Wash: 60°C domestic wash, 85°C industrial wash.

TIP

Great shades come to those who wait! Over time, repeated washing will give denim aprons a vintage appearance.

85°
WASH

NEW
COLOURS



60
COLOURS

DENIM DUO

JEANS STITCH DENIM WAIST APRON

PR125

- Four pocket compartments
- Contrast stitch detail
- Antique Silver and Brass rivets
- Length 39.5cm

FABRIC

70% Cotton, 30% Polyester
Weight 265gsm
Wash: 60°C domestic wash, 85°C industrial wash

COLOUR

2 as listed

JEANS STITCH DENIM BIB APRON

PR126

- Four pocket compartments
- Contrast stitch detail
- Adjustable buckle on neck band
- Width 72cm, length 86cm

FABRIC

70% Cotton, 30% Polyester
Weight 265gsm
Wash: 60°C domestic wash, 85°C industrial wash

COLOUR

2 as listed



DENIM

NEW
STYLE



PR154

COLOURFUL SERVICE

'COLOURS COLLECTION' BIB APRON WITH POCKET

PR154

- Sliding adjustable buckle on neck band
- 90cm self-fabric ties
- Width 72cm, length 86cm
- Tablet friendly centre pocket with combined pen slot

FABRIC

65% Polyester, 35% Cotton
Weight 195gsm
Wash: 60°C domestic wash,
85°C industrial wash

COLOUR

40 as listed

'COLOURS COLLECTION' HALF WAIST APRON

PR151

- Mid length waist apron
- 90cm self-fabric ties
- Width 70cm, length 50cm
- Available in 40 colours

FABRIC

65% Polyester, 35% Cotton
Weight 195gsm
Wash: 60°C domestic wash,
85°C industrial wash

COLOUR

40 as listed



PR151





PREMIER
UNIFORMS THAT WORK FOR YOU

PR155

'COLOURS COLLECTION' THREE POCKET WAIST APRON

PR155

- 90cm self-fabric ties
- Width 60cm, length 33cm
- Three open pockets
- Available in 28 colours

FABRIC

65% Polyester, 35% Cotton
Weight 195gsm
Wash: 60°C domestic wash,
85°C industrial wash

COLOUR

28 as listed

'COLOURS COLLECTION' LONG BAR APRON

PR158

- 90cm self-fabric ties
- Width 80cm, length 90cm
- Tablet friendly centre pocket with combined pen slot
- Popular continental style

FABRIC

65% Polyester, 35% Cotton
Weight 195gsm
Wash: 60°C domestic wash,
85°C industrial wash

COLOUR

28 as listed



PR158



IT'S CHILD'S PLAY

'COLOURS COLLECTION' CHILDREN'S BIB APRON

PR149

- Safety release mechanism on neck band
- 50cm self-fabric ties
- Two sizes available
- Infant width 43cm, length 53cm
- Junior width 48cm, length 63cm

FABRIC

65% Polyester, 35% Cotton
Weight 195gsm
Wash: 60°C domestic wash,
85°C industrial wash

COLOUR

16 as listed



'COLOURS COLLECTION' 2 IN 1 APRON

PR159

- One apron worn two ways
- Bib and waist apron styles
- Pocket features on both styles
- Self-fabric ties

FABRIC

65% Polyester, 35% Cotton
Weight 195gsm
Wash: 60°C domestic wash,
85°C industrial wash

COLOUR

10 as listed



Can be worn as a bib apron, doubles over and neck ties are secured away to form a waist apron.



POLYESTER BIB APRON

PR167

- Adjustable sliding buckle on neck band
- Width 72cm, length 86cm
- 90cm self-fabric ties
- Budget solution

FABRIC

100% Polyester
Weight 195gsm
Wash: 40°C domestic wash

COLOUR

4 as listed



BLACK DARK GREY WHITE RED

PR167



'COLOURS COLLECTION' CONTRAST BIB APRON

PR162

- Colour contrasting vertical panel
- Sliding adjustable buckle on neck band
- Width 72cm, length 86cm
- Two front slanted pockets

FABRIC

65% Polyester, 35% Cotton
Weight 195gsm
Wash: 60°C domestic wash,
85°C industrial wash

COLOUR

12 as listed



CONTRAST COLOUR COMBINATIONS

PR162



ESSENTIAL SERVICE

ESSENTIAL BIB APRON

PR165

- Classic bib apron
- Width 67cm, length 78cm
- 75cm self-fabric ties
- Budget solution

FABRIC

80% Polyester, 20% Cotton
Weight 170gsm
Wash: 40°C domestic wash.

COLOUR



BLACK



BISTRO VIBES

BISTRO WAIST APRON WITH POCKET

PR156

- 90cm self-fabric ties
- Width 90cm, length 80cm
- Waistband features a hanging pocket with pen slot
- Popular continental style

FABRIC

65% Polyester, 35% Cotton
Weight 195gsm
Wash: 60°C domestic wash, 85°C industrial wash

COLOUR



BLACK



BISTRO

**NEW
STYLE**

'COLOURS COLLECTION' BISTRO WAIST APRON

PR169

- Popular continental style
- Width 100cm, length 100cm
- 90cm self-fabric ties
- Available in 10 colours

FABRIC

65% Polyester, 35% Cotton
Weight 195gsm
Wash: 60°C domestic wash, 85°C industrial wash

COLOUR





FAIRTRADE COTTON APRONS

Premier offers a solution for businesses who promote a message of Fairtrade through their working practices. These aprons are labelled with the official Fairtrade logo which acts as a great endorsement for your brand.

FAIRTRADE BIB APRON

PR112

- Sliding adjustable buckle on neckband
- 90cm self-fabric ties
- Centre pocket
- Width 60cm, length 84cm

FABRIC

100% Certified Fairtrade Cotton
Weight 200gsm
Wash: 40°C domestic wash.

COLOUR



BLACK

FAIRTRADE WAIST APRON

PR114

- Half waist apron
- 90cm self-fabric ties
- Width 70cm
- Length 50cm

FABRIC

100% Certified Fairtrade Cotton
Weight 200gsm
Wash: 40°C domestic wash.

COLOUR



BLACK



20
COLOURS



COTTON CREDENTIALS

100% COTTON BIB APRON

PR102

- Self-fabric ties
- Self-fabric neckband
- Width 60cm, length 87cm
- Available in 20 colours

FABRIC

100% Cotton
Weight 240gsm
Wash: 60°C domestic wash,
85°C industrial wash



COLOUR

20 as listed



BIB APRON WITH POCKET

PR104

- Black anti-tangle ties
- Black neckband
- Width 60cm, length 87cm
- Double front pocket

FABRIC

65% Polyester, 35% Cotton.
Klopman Superbandmaster
Weight 210gsm
Wash: 60°C domestic wash,
85°C industrial wash

COLOUR



BLACK NAVY

BIB APRON

PR101

- Black anti-tangle ties
- Black neckband
- Width 72cm, length 87cm
- Crease resistant finish

FABRIC

65% Polyester, 35% Cotton.
Klopman Superbandmaster
Weight 210gsm
Wash: 60°C domestic wash,
85°C industrial wash

COLOUR



BLACK NAVY BOTTLE BURGUNDY RED

ZIP POCKET WAIST APRON

PR105

- Two zipped closed pockets
- Centre open pocket
- 90cm self-fabric ties
- Width 60cm, length 33cm

FABRIC

65% Polyester, 35% Cotton.
Klopman Indestructible
Weight 245gsm
Wash: 60°C domestic wash,
85°C industrial wash

COLOUR



BLACK



8 KLOPMAN STYLES

Klopman fabric is renowned for exceptional colour consistency and colour retention. You can be assured that these styles work as hard as you day after day.

PR124

DELUXE BIB APRON

PR124

- Sliding adjustable buckle on neck band
- Double front pocket
- Width 60cm
- Length 84cm

FABRIC

65% Polyester, 35% Cotton.
Klopman Superbandmaster
Weight 210gsm
Wash: 60°C domestic wash,
85°C industrial wash

COLOUR



BLACK NAVY WHITE BOTTLE



PR105



LONG BAR APRON WITH POCKET

PR106

- Tablet friendly front pocket
- Combined pen pocket
- Width 90cm
- Length 80cm

FABRIC

65% Polyester, 35% Cotton.
Klopman Indestructible
Weight 245gsm
Wash: 60°C domestic wash,
85°C industrial wash

COLOUR



BLACK

LONG BAR APRON

PR108

- Long waist apron
- 90cm self-fabric ties
- Width 90cm
- Length 80cm

FABRIC

65% Polyester, 35% Cotton.
Klopman Indestructible
Weight 245gsm
Wash: 60°C domestic wash,
85°C industrial wash

COLOUR



BLACK



CLASSIC SERVICE OPTIONS

SHORT BAR APRON

PR107

- Half waist apron
- 90cm self-fabric ties
- Width 90cm
- Length 40cm

FABRIC

65% Polyester, 35% Cotton.
Klopman Indestructible
Weight 245gsm
Wash: 60°C domestic wash,
85°C industrial wash

COLOUR



BLACK

3 OPEN POCKET BAR APRON

PR109

- Three open pockets
- 90cm self-fabric ties
- Width 60cm
- Length 33cm

FABRIC

65% Polyester, 35% Cotton.
Klopman Indestructible
Weight 245gsm
Wash: 60°C domestic wash,
85°C industrial wash

COLOUR



BLACK



PR172

LADIES' LONG LENGTH POCKET TABARD

PR172

- Pull-on coverall with a length of 78cm
- Side tabs with adjustable press stud fastening
- Self-coloured bias trim
- Centre pocket

FABRIC

65% Polyester, 35% Cotton
Weight: 195gsm
Wash: 60°C domestic wash, 85°C industrial wash

SIZES

10/S, 12/M, 14/L, 16/XL

COLOUR

3 colours as listed



LADIES' POCKET TABARD

PR171

- Pull-on coverall with a length of 68cm
- Side tabs with adjustable press stud fastening
- Self-coloured bias trim
- Centre pocket

FABRIC

65% Polyester, 35% Cotton
Weight: 195gsm
Wash: 60°C domestic wash, 85°C industrial wash

SIZES

10/S, 12/M, 14/L, 16/XL, 18/2XL, 20/3XL

COLOUR

18 colours as listed right



PR171

18
COLOURS



TABARDS

WE'VE GOT YOU COVERED

LADIES' CONTRAST TABARD

PR176

- Over-the-head style
- Side tabs with two stud button fastenings
- Two front slanted pockets
- Length 72cm

FABRIC

65% Polyester, 35% Cotton
Weight: 195gsm
Wash: 60°C domestic wash,
85°C industrial wash

SIZES

10/S, 12/M, 14/L, 16/XL

COLOUR

2 as listed



PR176



TULIP WRAP AROUND TUNIC

PR177

- Over-the-head style
- Attractive shape to flatter the female figure
- V-neck styling
- Centre patch pocket

FABRIC

Fabric: 100% polyester plain weave
Weight: 185gsm
Wash: 40°C domestic wash.

SIZES

S/M, 10/12
L/XL, 14/16

COLOUR

4 as listed below

FASTENING TIP

Bring the ties from back to front and tie round your waist on the underside, then take front ties and fasten at the back.



TUNIC

NEW
STYLE

PR177



CHEFSWEAR

== PREPARATION IS EVERYTHING ==

Before every successful service comes a great deal of preparation and it's Premier's job to ensure that chef and the team are dressed and prepped ready to go. Chef must dress for practicality to deal with the demands of the pressurised kitchen environment, whilst also dressing for the audience with many modern day restaurants enjoying an open plan concept.

The Premier chef's wear collection combines both practicality and style, with traditional chef's whites giving way to more casual alternatives. Anyone working in food and hygiene sensitive environments needs appropriate uniforms solutions and Premier has this in abundance with size and choice running throughout the collection.



SHORT SLEEVE STUDDED FRONT CHEF'S JACKET

PR664

- Mandarin collar
- Press stud fastening
- Wrap over style
- Unisex styling

FABRIC

65% Polyester, 35% Cotton
Weight: 195gsm
Wash: 60°C domestic wash,
85°C industrial wash

SIZES

XS, S, M, L, XL, 2XL

COLOUR

2 as listed

LONG SLEEVE STUDDED FRONT CHEF'S JACKET

PR665

- Mandarin collar
- Press stud fastening
- Wrap over style
- Unisex styling

FABRIC

65% Polyester, 35% Cotton
Weight: 195gsm
Wash: 60°C domestic wash,
85°C industrial wash

SIZES

XS, S, M, L, XL, 2XL

COLOUR

2 as listed



BLACK

WHITE

PR665

PR664

THE MAIN INGREDIENTS



PR671

LADIES' SHORT SLEEVE CHEF'S JACKET

PR670

- Ten button hole wrap over fastening
- Pen pocket on left sleeve
- Mandarin collar
- Panelled back for a more fitted style

FABRIC

65% Polyester, 35% Cotton.
Weight: 195gsm

SIZES

8/XS, 10/S, 12/M, 14/L, 16/XL, 18/2XL

COLOUR

1 as listed



LADIES' LONG SLEEVE CHEF'S JACKET

PR671

- Ten button hole wrap over fastening
- Pen pocket on left sleeve
- Mandarin collar
- Panelled back for a more fitted style

FABRIC

65% Polyester, 35% Cotton.
Weight: 195gsm

SIZES

8/XS, 10/S, 12/M, 14/L, 16/XL, 18/2XL

COLOUR

1 as listed



LADIES' CHEFSWEAR

IN 2 CLASSIC STYLES



PR670

CULINARY CLASSICS

THE LONG & SHORT OF IT



PR657



PR656

SHORT SLEEVE CHEF'S JACKET

PR656

- Ten button hole wrap over fastening
- Pen pocket on left sleeve
- Mandarin collar
- Long life resin buttons

FABRIC

65% Polyester, 35% Cotton.
Weight: 195gsm

SIZES

XS, S, M, L, XL, 2XL, 3XL, 4XL

COLOUR

2 as listed

LONG SLEEVE CHEF'S JACKET

PR657

- Ten button hole wrap over fastening
- Pen pocket on left sleeve
- Mandarin collar
- Long life resin buttons

FABRIC

65% Polyester, 35% Cotton.
Weight: 195gsm

SIZES

XS, S, M, L, XL, 2XL, 3XL, 4XL

COLOUR

2 as listed



CATCH

OF THE DAY

CHEF'S SHORT SLEEVE 'CULINARY' PULL ON TUNIC

PR668

- Over-the-head style
- Mandarin collar
- Wrap over style
- Single press stud fastening

FABRIC

65% Polyester, 35% Cotton
Weight: 195gsm
Wash: 60°C domestic wash,
85°C industrial wash

SIZES

XS, S, M, L, XL, 2XL

COLOUR

1 as listed opposite



CHEF'S LONG SLEEVE 'CULINARY' PULL ON TUNIC

PR669

- Over-the-head style
- Mandarin collar
- Wrap over style
- Single press stud fastening

FABRIC

65% Polyester, 35% Cotton
Weight: 195gsm
Wash: 60°C domestic wash,
85°C industrial wash

SIZES

XS, S, M, L, XL, 2XL

COLOUR

1 as listed opposite



PR668

PR669



WORK COAT

PR601

- Concealed press stud fastening
- Left chest open mitred pocket
- Two lower mitred patch pockets
- 100cm long

FABRIC

65% Polyester, 35% Cotton
Weight: 195gsm

SIZES

M, L, XL

COLOUR

2 as listed



LONG SLEEVE COOLMAX CHEF'S JACKET



PR659

- Coolmax back panel for moisture management
- Mandarin collar
- Concealed press stud fastening

FABRIC

65% Polyester, 35% Cotton
Weight: 195gsm
Wash: 50°C domestic wash

SIZES

XS, S, M, L, XL, 2XL

COLOUR 1 as listed



PREMIER
UNIFORMS THAT WORK FOR YOU



LONG SLEEVE CUISINE CHEF'S JACKET

PR661

- Mandarin collar
- Comes with Black removable studs (other colours available, see page 119)
- Ten hole wrap over fastening
- Turn back split cuff

FABRIC

65% Polyester, 35% Cotton
Weight: 195gsm

SIZES

XS, S, M, L, XL, 2XL, 3XL, 4XL

COLOUR

2 as listed



COOLCHECKER

NEW
STYLE

COOL[®]
CHECKER

CHEF'S COOLCHECKER T-SHIRT

PR649

- Crew neck styling
- Mesh back panel for airflow
- Underarm side vent holes
- Pen pocket on left sleeve

FABRIC

100% Polyester
Weight: 135gsm
Wash: 40°C domestic wash

SIZES

XS, S, M, L, XL, 2XL, 3XL

COLOUR

2 as listed



PEN POCKET •
UNDER ARM SIDE VENT HOLES •



SLIM FIT

PR554

REGULAR FIT

PR553

YOU WEAR THE TROUSERS



CHEF'S SELECT SLIM LEG TROUSER

PR554

- Fitted style on lower leg
- Rear patch pocket
- Patch pocket on right leg
- Elasticated waist with draw cord and zip fly fastening

FABRIC

65% Polyester, 35% Cotton.
Weight: 195gsm
Wash: 60°C domestic wash,
85°C industrial wash

SIZES

XS, S, M, L, XL, 2XL

COLOUR

1 colour as listed

PULL ON CHEF'S TROUSER

PR552

- Elasticated waist
- Rear patch pocket
- Zip fly
- 77cm/30.5" inside leg

FABRIC

65% Polyester, 35% Cotton.
Weight: 195gsm
Wash: 60°C domestic wash,
85°C industrial wash

SIZES

XS, S, M, L, XL, 2XL

COLOUR

2 colours as listed

ESSENTIAL CHEF'S TROUSER

PR553

- Elasticated waist
- Draw cord
- Swing pockets
- 77cm/30.5" inside leg

FABRIC

65% Polyester, 35% Cotton.
195gsm (Black, Black & White Check)
203gsm (Black/ Grey Fine Stripe)
Wash: 60°C domestic wash,
85°C industrial wash

SIZES

XS, S, M, L, XL, 2XL, 3XL, *4XL
(*4XL only available in Black)

COLOUR

3 colours as listed



CHEF'S ZANDANA

PR658

- Two ties at the back
- Elasticated back
- Neck flap
- Unisex design

FABRIC

65% Polyester, 35% Cotton.
Weight: 195gsm

SIZES

One Size

COLOUR

2 as listed



CHEF'S SKULL CAP

PR653

- Flat top
- Elasticated back
- One size fits all

FABRIC

Colours - 65% Polyester, 35% Cotton
*Striped - 100% Cotton
Weight: Colours - 195gsm
*Striped - 240gsm
Wash: 60°C domestic wash,
85°C industrial wash

SIZES

One size

COLOUR

8 as listed



CHEF'S SCARF

PR654

- Triangular scarf
- Can be worn as a bandana, neckerchief or headband
- Colours to complement aprons, stud and skull caps
- Crease resistant finish

FABRIC

Colours - 65% Polyester, 35% Cotton
*Striped - 100% Cotton
Weight: Colours - 195gsm
*Striped - 240gsm
Wash: 60°C domestic wash,
85°C industrial wash

SIZES

One Size

COLOUR

8 as listed

TURN UP CHEF'S HAT

PR648

- Turn up double edge band
- Five eyelets for ventilation
- Four sizes available

FABRIC

65% Polyester, 35% Cotton.
Weight: 195gsm
Wash: 60°C domestic wash,
85°C industrial wash

SIZES

S, M, L, XL

COLOUR



HEADWEAR

**NEW
STYLE**

CHEF'S JACKET STUDS

PR652

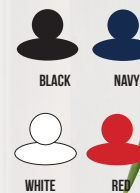
- Removable studs
- For use with PR661 Cuisine Jacket (page 113)
- Sold in bags of 12

FABRIC

Durable plastic
Wash: Wipe clean

COLOUR

4 as listed



PR648

PR652



'COLOURS COLLECTION'

'COLOURS COLLECTION' BIB APRON

PR150

- Bib apron offering good coverage
- Adjustable buckle on neckband
- Self-fabric ties
- Length of 86cm and width of 72cm

FABRIC

65% Polyester, 35% Cotton.
Weight: 195gsm
Denim designs are 70% Cotton, 30% Polyester
Denim designs are 265gsm
Wash: 60°C domestic wash, 85°C industrial wash.

TIP

Great shades come to those who wait! Over time, repeated washing will give denim aprons a vintage appearance.



PURE COTTON

100% COTTON BIB APRON

PR102

- Self-fabric ties
- Self-fabric neckband
- Width 60cm, length 87cm
- Available in 20 colours

FABRIC

100% Cotton
Weight 240gsm
Wash: 60°C domestic wash,
85°C industrial wash

COLOUR

20 as listed



PR102



STRIPED BIB APRON

PR110

- Butcher's style apron
- 90cm self-fabric ties and neck band
- Width 72cm, length 101cm

FABRIC

Navy/White, Black/White: 100% Cotton
Weight 240gsm

Black/Grey, Black/Grey fine stripe:
65% Polyester, 35% Cotton
Weight 205gsm

Wash: 60°C domestic wash,
85°C industrial wash

COLOUR



CLASSIC HALF STRIPE APRON

PR168

- Popular vertical striped pattern
- Width 70cm, length 50cm
- 90cm self-fabric ties
- Printed stripes

FABRIC

100% Cotton
Weight: 240gsm
Wash: 60°C domestic wash,
85°C industrial wash

COLOUR

2 as listed



NAVY/WHITE

BLACK/WHITE



PR168

PR110



GASTRONOMY WAIST APRON

PR164

- Tapered style
- Popular striped pattern
- Width 75cm, length 86cm
- 90cm self-fabric ties

FABRIC

65% Polyester, 35% Cotton
Weight: 205gsm
Wash: 60°C domestic wash,
85°C industrial wash

COLOUR

2 as listed



JEANS STITCH DENIM WAIST APRON

PR125

- Four pocket compartments
- Contrast stitch detail
- Antique Silver and Brass rivets
- Length 39.5cm

FABRIC

70% Cotton, 30% Polyester
Weight: 265gsm
Wash: 60°C domestic wash,
85°C industrial wash

COLOUR

2 as listed



JEANS STITCH DENIM BIB APRON

PR126

- Four pocket compartments
- Contrast stitch detail
- Adjustable buckle on neck band
- Width 72cm, length 86cm

FABRIC

70% Cotton, 30% Polyester
Weight: 265gsm
Wash: 60°C domestic wash, 85°C industrial wash

COLOUR

2 as listed



DENIM

**NEW
STYLE**

PR125

PR126

BEAUTY

== & HEALTH ==

SALON STYLES IN FOCUS

Whether you're running a high street beauty salon, an exclusive spa retreat or a specialist aesthetics clinic, a good dress code will help your staff radiate professionalism and instil confidence from your customers.



VERSATILE
CHOICE

SALON
X
HOTEL
X
CHILD CARE
X
FLORIST



Orchid

WRAP OVER TUNIC

PR682

- Flattering feminine fit with bust and back darts
- Mandarin collar
- Eight 'bar' button fastening
- Side vents

FABRIC

100% Polyester plain weave
Weight: 185gsm
Wash: 40°C domestic wash

SIZES

6/2XS, 8/XS, 10/S, 12/M, 14/L, 16/XL, 18/2XL,
20/3XL, 22/4XL, 24/5XL

14
COLOURS



Peony

CONTRAST PANELLED TUNIC

PR684

- Flattering feminine fit with bust and back darts
- V-neck with contrast coloured insert
- Pull-on style with back zip fastening
- Side vents

FABRIC

100% Polyester plain weave
Weight: 185gsm
Wash: 40°C domestic wash

SIZES

6/2XS, 8/XS, 10/S, 12/M, 14/L, 16/XL, 18/2XL,
20/3XL, 22/4XL, 24/5XL

COLOUR

2 colours as listed



PR684

Rose

WRAP SATIN TRIM TUNIC

PR690

- Flattering feminine fit with bust and back darts
- Satin trim creating the illusion of a wrap tunic
- Pull-on style with back zip fastening
- Side vents

FABRIC

100% Polyester plain weave
Weight: 185gsm
Wash: 40°C domestic wash

SIZES

6/2XS, 8/XS, 10/S, 12/M, 14/L, 16/XL, 18/2XL,
20/3XL, 22/4XL, 24/5XL

COLOUR

4 colours as listed opposite



PREMIER
UNIFORMS THAT WORK FOR YOU

PR690

Mika

FEATURE BUTTON TUNIC

PR681

- Flattering feminine fit with bust and back darts
- Four sparkly feature buttons embellished on the trim
- Pull-on style with back zip fastening
- Side vents

FABRIC

100% Polyester plain weave
Weight: 185gsm
Wash: 40°C domestic wash

SIZES

6/2XS, 8/XS, 10/S, 12/M, 14/L, 16/XL, 18/2XL,
20/3XL, 22/4XL, 24/5XL

COLOUR

2 colours as listed below



BLACK

HOT PINK & BLACK

Ivy

CONTRAST NECK TUNIC

PR691

- Flattering feminine fit with bust and back darts
- Cross-over neckline with contrast coloured trim
- Pull-on style with back zip fastening
- Side vents

FABRIC

100% Polyester plain weave
Weight: 185gsm
Wash: 40°C domestic wash

SIZES

6/2XS, 8/XS, 10/S, 12/M, 14/L, 16/XL, 18/2XL,
20/3XL, 22/4XL, 24/5XL

COLOUR

4 colours as listed below



STRAWBERRY RED
& BLACK

HOT PINK &
BLACK

PURPLE &
BLACK

TURQUOISE &
BLACK



Lily

CONTRAST TUNIC

PR687

- Flattering feminine fit with bust and back darts
- Contrast coloured piping detail
- Eight 'bar' button fastening
- Side vents

FABRIC

100% Polyester plain weave
Weight: 185gsm
Wash: 40°C domestic wash

SIZES

6/2XS, 8/XS, 10/S, 12/M, 14/L, 16/XL, 18/2XL,
20/3XL, 22/4XL, 24/5XL

COLOUR

8 colours as listed opposite



Camellia

ZIP TUNIC

PR686

- Flattering feminine fit with bust and back darts
- Cross over neckline
- Pull-on style with front feature zip
- Side vents

FABRIC

100% Polyester plain weave
Weight: 185gsm
Wash: 40°C domestic wash

SIZES

6/2XS, 8/XS, 10/S, 12/M, 14/L, 16/XL, 18/2XL,
20/3XL, 22/4XL, 24/5XL

COLOUR

3 colours as listed opposite



Epsom

MEN'S WRAP TUNIC

PR693

- Brushed silver fastening button
- Concealed zip fastening
- Mandarin Collar
- Side vents

FABRIC

100% Polyester plain weave
Weight: 185gsm
Wash: 40°C domestic wash

SIZES

S/37", **M**/40", **L**/42", **XL**/46",
2XL/49"



Blossom

ASYMMETRIC BUTTON TUNIC

PR683

- Flattering feminine fit with bust and back darts
- Mandarin collar
- Concealed zip through fastening and press stud
- Side vents

FABRIC

100% Polyester plain weave
Weight: 185gsm
Wash: 40°C domestic wash

SIZES

6/2XS, **8**/XS, **10**/S, **12**/M, **14**/L, **16**/XL, **18**/2XL,
20/3XL, **22**/4XL, **24**/5XL

COLOUR

4 colours as listed below



Iris

SALON TROUSERS

PR536

- Deep waistband with two button fastening
- Straight leg cut
- Zip fly fastening

FABRIC

100% Polyester plain weave
Weight: 185gsm
Wash: 40°C domestic wash

SIZES

8/XS, 10/S, 12/M, 14/L, 16/XL, 18/2XL, 20/3XL,
22/4XL, 24/5XL

Regular leg 31"/79 cm
Long leg 34"/86 cm



PREMIER
UNIFORMS THAT WORK FOR YOU

Tulip

WRAP AROUND TUNIC

PR177

- Over-the-head style
- Attractive shape to flatter the female figure
- V-neck styling
- Centre patch pocket

FABRIC

Fabric: 100% polyester plain weave
Weight: 185gsm
Wash: 40°C domestic wash.

SIZES

S/M, 10/12
L/XL, 14/16

COLOUR

4 colours as listed below

TIP.

Bring the ties from back to front and tie round your waist on the underside, then take front ties and fasten at the back.

TUNIC

NEW
STYLE



TABARDS

CLEAN UP ON STYLE

18
COLOURS



LADIES' POCKET TABARD

PR171

- Pull-on coverall with a length of 68cm
- Side tabs with adjustable press stud fastening
- Self-coloured bias trim
- Centre pocket

FABRIC

65% Polyester, 35% Cotton
Weight: 195gsm
Wash: 60°C domestic wash, 85°C industrial wash

SIZES

10/S, 12/M, 14/L, 16/XL, 18/2XL, 20/3XL

COLOUR

18 colours as listed left



LADIES' LONG LENGTH POCKET TABARD

PR172

- Pull-on coverall with a length of 78cm
- Side tabs with adjustable press stud fastening
- Self-coloured bias trim
- Centre pocket

FABRIC

65% Polyester, 35% Cotton
Weight: 195gsm
Wash: 60°C domestic wash, 85°C industrial wash

SIZES

10/S, 12/M, 14/L, 16/XL

COLOUR

3 colours as listed

LADIES' SPA TABARD

PR176

- Pull-on coverall with a length of 72cm
- Side tabs with adjustable press stud fastening
- Cross over neckline with contrast trim
- Two front slanted pockets with contrast trim

FABRIC

65% Polyester, 35% Cotton
Weight: 195gsm
Wash: 60°C domestic wash, 85°C industrial wash

SIZES

10/S, 12/M, 14/L, 16/XL

COLOUR

2 colours as listed



60
COLOURS

'COLOURS COLLECTION' BIB APRON

PR150

- Bib apron offering good coverage
- Adjustable buckle on neckband
- Self-fabric ties
- Length of 86cm and width of 72cm

FABRIC

65% Polyester, 35% Cotton.

Weight: 195gsm

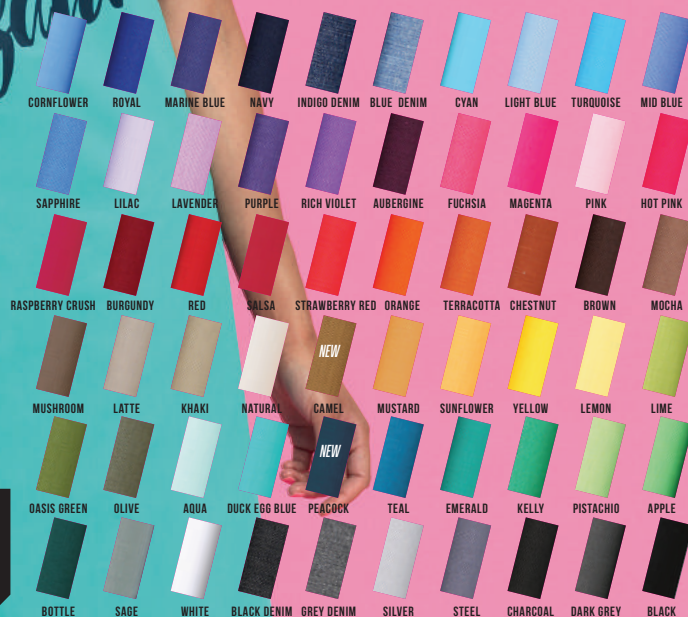
Denim designs are 70% Cotton, 30% Polyester

Denim designs are 265gsm

Wash: 60°C domestic wash, 85°C industrial wash.

TIP

Great shades come to those who wait! Over time, repeated washing will give denim aprons a vintage appearance.



NEW
COLOURS

HEALTH TUNICS

DAISY HEALTHCARE TUNIC

PR605

- V-neck styling
- Concealed zip fastening with press stud.
- Two curved front pockets
- Contrast trim on neckline, sleeves and pockets

FABRIC

65% Polyester, 35% Cotton

Weight: 195gsm

Wash: : 60°C domestic wash,

85°C industrial wash

SIZES

8/XS, 10/S, 12/M, 14/L, 16/XL, 18/2XL, 20/3XL, 22/4XL, 24/5XL

COLOUR

4 as listed



ROYAL NAVY WHITE LILAC

PR605

MEN'S MALVERN HEALTHCARE TUNIC

PR609

- Concealed zip fastening with press stud
- Soft collar styling
- Two front pockets
- Contrast trim on collar, sleeves and pockets

FABRIC
65% Polyester, 35% Cotton
Weight: 195gsm
Wash: 60°C domestic wash, 85°C industrial wash

SIZES

S/37", **M**/40", **L**/42", **XL**/46",
2XL/49", **3XL**/52"



NAVY/WHITE

PR609

VITALITY HEALTHCARE TUNIC

PR604

- Soft collar styling
- Concealed zip fastening and press stud
- Two slanted front pockets
- Contrast trim on neckline, sleeves and pockets

FABRIC

65% Polyester, 35% Cotton
Weight: 195gsm
Wash: 60°C domestic wash, 85°C industrial wash

SIZES

8/XS, **10/S**, **12/M**, **14/L**, **16/XL**, **18/2XL**, **20/3XL**,
22/4XL, **24/5XL**,

COLOUR

6 as listed

POPPY HEALTHCARE TROUSER

PR514

- Cross over waistband with two button fastening
- Front fastening zip
- Belt loops
- Two slanted front pockets

FABRIC

65% Polyester, 35% Cotton
Weight: 195gsm
Wash: 60°C domestic wash, 85°C industrial wash

SIZES

8/XS, **10/S**, **12/M**, **14/L**, **16/XL**, **18/2XL**, **20/3XL**,
22/4XL, **24/5XL**,

COLOUR

5 as listed



PR604

BOTTLE NAVY ROYAL MID BLUE WHITE LILAC



PR514

BOTTLE NAVY ROYAL MID BLUE WHITE

PR514

ETHICAL POLICY

CERTIFICATIONS OF COMPLIANCE

At Premier we take our Corporate Social Responsibility very seriously and we continue to invest to ensure that the long term vision for the company is sustainable in relation to the environment and the people that live and work alongside us.

We are able to provide you with copies of our certifications of compliance, so you can be assured that we are working to the highest ethical, social and environmental standards we can.



Registration, Evaluation, Authorisation and Restriction of Chemicals (REACH)

The REACH directive is a European Union regulation concerning the protection of human health and the environment from the use of chemicals during the production process. All Premier products are produced in factories that are REACH compliant.

Visit www.hse.gov.uk/reach to learn more about the REACH directive.



OEKO-TEX® Standard 100

OEKO-TEX® Standard 100 is an independent testing and certification system for textiles which highlights the use of any dangerous substances that could be harmful to human health.

At every stage of production, the majority of the Premier fabrics have passed the recognised criteria, proving that no such chemicals have been used during any stage of production. All products that are manufactured from OEKO-TEX® Standard 100 approved fabric have the logo visible on the product page on the Premier website.

Visit www.oeko-tex.com to learn more about OEKO-TEX® Standard 100 testing.



Worldwide Responsible Accredited Production (WRAP)

WRAP is an independent body which gives certification to factories that meet criteria in relation to facilities, production and working practices for employees.

All of the Premier garments that are produced outside of the United Kingdom have been made in WRAP certified factories. The garments that are produced in the UK are made in factories that adhere to 'European Agency Health and Safety at Work' regulations. All garments that are produced in WRAP certified factories have the logo visible on the product page on the Premier website.

Visit www.wrapcompliance.org to learn more about WRAP accreditation.

Read more about our ethical policy at www.premierworkwear.com

SIZE GUIDE

LADIES'

Shirts/Polos/Chef's Jackets/Knitwear/Waistcoats/Beauty Tunics

Call size	XXS	XS	S	M	L	XL	2XL	3XL	4XL	5XL	6XL
Size	6	8	10	12	14	16	18	20	22	24	26
Collar cm	39	40	41	42	44	45	47	48	50	51	53
Bust to fit "	31	33	35	37	39	41	43	45	47	49	51
Bust to fit cm	79	84	89	94	99	104	109	114	119	124	129

LADIES TROUSERS

Call size	XXS	XS	S	M	L	XL	2XL	3XL	4XL	5XL
Size	6	8	10	12	14	16	18	20	22	24
Waist to fit "	22	24	26	28	30	32	34	36	38	40
Waist to fit cm	54	59	64	69	74	79	84	89	94	99

MEN'S

Shirts/Polos/Chef's Jackets/Knitwear/Waistcoats/Health Tunics

Call size	XS	S	S/M	M	M/L	L	L/XL	XL	2XL	3XL	4XL	5XL	6XL	7XL
Collar "	14	14½	15	15½	16	16½	17	17½	18	18½	19	20	21	22
Collar cm	36	37	38	39	41	42	43	44	46	47	48	51	53	56
Chest to fit "	30	34	36	38	40	42	44	46	50	52	54	56	58	60
Chest to fit cm	77	87	92	96	102	107	111	117	126	132	138	142	147	152

MEN'S TROUSERS

Call size	S	M	L	XL	2XL	3XL	4XL	5XL
To fit waist"	30	32	34	36	38	40	42	44
To fit waist cm	76	80	86	92	96	100	106	110

CHEF'S TROUSERS

Call size	XS	S	M	L	XL	2XL	3XL	4XL	5XL
To fit waist"	24-26	27-29	30-32	33-35	36-38	39-40	41-42	43-44	45-46
To fit waist cm	61-66	68-73	76-81	84-89	91-96	99-101	104-106	109-111	114-116



CLASSIC
FIT



SEMI
FITTED



FITTED
STYLE



Our clothes are labelled with a whole host of wash care instructions and symbols, but do you really know what they all mean?

FOLLOW PREMIER'S SIMPLE GUIDE TO ACHIEVING THE PERFECT PILE OF LAUNDRY!

WASHING



The wash bowl with a number in denotes the maximum temperature that you should wash the garment to, in either a domestic or industrial washing machine.



Hand wash only



Do not bleach



Suitable for dry cleaning



Do not dry clean

DRYING



Do not wring



Hang to dry



Dry flat



Drip dry



Do not tumble dry



Suitable for tumble drying



Tumble dry on low heat



Tumble dry on medium heat



Tumble dry on high heat

IRONING



Do not iron



Iron on low heat



Iron on medium heat



Iron on high heat



Do not steam iron



BUSINESSWEAR

SHIRTS & BLOUSES

PR200	MEN'S POPLIN LONG SLEEVE SHIRT	20
PR202	MEN'S POPLIN SHORT SLEEVE SHIRT	19
PR204	MEN'S FITTED POPLIN SHIRT	23
PR207	MEN'S SUPREME POPLIN LONG SLEEVE SHIRT	12
PR209	MEN'S SUPREME POPLIN SHORT SLEEVE SHIRT	11
PR220	MEN'S MICROCHECK GINGHAM LONG SLEEVE SHIRT	8
PR234	MEN'S SIGNATURE OXFORD LONG SLEEVE SHIRT	16
PR236	MEN'S SIGNATURE OXFORD SHORT SLEEVE SHIRT	15
PR300	LADIES' POPLIN LONG SLEEVE BLOUSE	20
PR302	LADIES' POPLIN SHORT SLEEVE BLOUSE	19
PR305	LADIES' POPLIN THREE QUARTER SLEEVE BLOUSE	22
PR307	LADIES' SUPREME POPLIN LONG SLEEVE BLOUSE	12
PR309	LADIES' SUPREME POPLIN SHORT SLEEVE BLOUSE	12
PR320	LADIES' MICROCHECK GINGHAM LONG SLEEVE SHIRT	8
PR321	LADIES' MICROCHECK GINGHAM SHORT SLEEVE SHIRT	8
PR334	LADIES' SIGNATURE OXFORD LONG SLEEVE BLOUSE	16
PR336	LADIES' SIGNATURE OXFORD SHORT SLEEVE BLOUSE	15

KNITWEAR

PR694	MEN'S V NECK SWEATER	24
PR695	MEN'S QUARTER ZIP KNITTED SWEATER	29
PR696	LADIES' V NECK SWEATER	27
PR697	LADIES' V NECK CARDIGAN	24
PR698	LADIES' LONG LENGTH KNITTED CARDIGAN	29

TROUSERS

PR520	MEN'S BUSINESS TROUSER	30
PR526	MEN'S TAILORED TROUSERS	30
PR528	MEN'S SUM FIT TROUSER	31
PR530	LADIES' BUSINESS TROUSERS	31
PR536	LADIES' 'IRIS' STRAIGHT LEG TROUSER	30
PR538	LADIES' TAPERED LEG TROUSER	31

SECURITY

PR210	MEN'S PILOT LONG SLEEVE SHIRT	32
PR212	MEN'S PILOT SHORT SLEEVE SHIRT	35
PR310	LADIES' PILOT LONG SLEEVE SHIRT	32
PR312	LADIES' PILOT SHORT SLEEVE SHIRT	35
PR523	MEN'S SECURITY TROUSER	34
PR532	LADIES' SECURITY TROUSER	34
PR700	PLAIN WORK TIE	34
PR710	CLIP ON WORK TIE	34
PR711	CLIP ON CRAVAT	34
PR715	EPAULETTES	34

TIES

PR705	SATIN BOW TIE	42
PR722	HORIZONTAL STRIPE TIE	42
PR750	'COLOURS' SATIN TIE	45
PR755	'COLOURS' SATIN CLIP ON TIE	45
PR760	MULTI-STRIPE TIE	43
PR762	FOUR STRIPE TIE	43
PR765	'COLOURS' FASHION TIE	49
PR766	CANDY STRIPE TIE	42
PR780	MICRO WAFFLE TIE	37
PR781	MICRO DOT TIE	39
PR782	DOUBLE STRIPE TIE	40
PR783	WAFFLE STRIPE TIE	36
PR784	SPORTS STRIPE TIE	40
PR785	'COLOURS' FASHION CLIP ON TIE	49
PR786	CLUB STRIPE TIE	39
PR787	PUPPY TOOTH TIE	37
PR788	SQUARES TIE	39
PR789	SUM KNITTED TIE	41
PR793	SUM TIE	43
PR795	'COLOURS' SILK TIE	42

SCARVES

PR730	'COLOURS' PLAIN BUSINESS SCARF	48
PR740	'COLOURS' PLAIN CHIFFON SCARF	46
PR770	MULTI STRIPE SCARF	43
PR772	FOUR STRIPE SCARF	43

HOSPITALITYWEAR

APRONS

PR101	BIB APRON	94
PR102	COTTON BIB APRON	93
PR104	BIB APRON WITH POCKET	94
PR105	ZIP POCKET WAIST APRON	94
PR106	LONG BAR APRON WITH POCKET	96
PR107	SHORT BAR APRON	97
PR108	LONG BAR APRON	96
PR109	THREE OPEN POCKET BAR APRON	97
PR112	FAIRTRADE BIB APRON	90
PR114	FAIRTRADE WAIST APRON	90
PR124	DELUXE BIB APRON	95
PR125	JEANS STITCH DENIM WAIST APRON	78
PR126	JEANS STITCH DENIM BIB APRON	78
PR149	CHILDREN'S BIB APRON	84
PR150	'COLOURS' BIB APRON	77
PR151	'COLOURS' HALF WAIST APRON	81
PR154	'COLOURS' BIB APRON WITH POCKET	80
PR155	'COLOURS' THREE POCKET APRON	82
PR156	BISTRO WAIST APRON WITH POCKET	89
PR158	'COLOURS' LONG BAR APRON	83
PR159	'COLOURS' 2 IN 1 APRON	85
PR162	CONTRAST BIB APRON	87
PR165	ESSENTIAL BIB APRON	88
PR167	100% POLYESTER APRON	86
PR169	BISTRO WAIST APRON	89

TABARDS

PR171	LADIES' POCKET TABARD	98
PR172	LADIES' LONG POCKET TABARD	98
PR176	CONTRAST TABARD	100
PR177	LADIES' 'TULIP' WRAP AROUND TUNIC	101

SHIRTS & BLOUSES

PR200	MEN'S POPLIN LONG SLEEVE SHIRT	56
PR202	MEN'S POPLIN SHORT SLEEVE SHIRT	55
PR206	MEN'S ROLL SLEEVE BAR SHIRT	65
PR214	MEN'S LONG SLEEVE FITTED FRIDAY SHIRT	60
PR217	MEN'S POPLIN CROSS-DYE ROLL SLEEVE SHIRT	63
PR220	MEN'S MICROCHECK GINGHAM LONG SLEEVE SHIRT	52
PR222	MEN'S JEANS STITCH DENIM SHIRT	58
PR300	LADIES' POPLIN LONG SLEEVE BLOUSE	56
PR302	LADIES' POPLIN SHORT SLEEVE BLOUSE	55
PR305	LADIES' POPLIN THREE QUARTER SLEEVE BLOUSE	66
PR306	LADIES' ROLL SLEEVE BAR SHIRT	65
PR314	LADIES' LONG SLEEVE FITTED FRIDAY SHIRT	60
PR317	LADIES' POPLIN CROSS-DYE ROLL SLEEVE SHIRT	63
PR320	LADIES' MICROCHECK GINGHAM LONG SLEEVE SHIRT	52
PR321	LADIES' MICROCHECK GINGHAM SHORT SLEEVE SHIRT	52
PR322	LADIES' JEANS STITCH DENIM SHIRT	58

WAISTCOATS

PR620	MEN'S HOSPITALITY WAISTCOAT	68
PR621	LADIES' HOSPITALITY WAISTCOAT	68
PR622	MEN'S LINED WAISTCOAT	68
PR623	LADIES' LINED WAISTCOAT	68

POLO SHIRTS

PR610	MEN'S STUDDED POLO	74
PR612	COOLCHECKER STUD POLO	75
PR615	COOLCHECKER MEN'S PIQUE POLO	70
PR616	COOLCHECKER LADIES' PIQUE POLO	70
PR617	LONG SLEEVE COOLCHECKER PIQUE POLO	74
PR618	MEN'S CONTRAST TIPPED COOLCHECKER POLO	73
PR619	LADIES' CONTRAST TIPPED COOLCHECKER POLO	73

TROUSERS

PR523	MEN'S HOSPITALITY TROUSER	67
PR532	LADIES' HOSPITALITY TROUSER	67

CHEFSWEAR

CHEF'S JACKETS

PR601	CHEF'S WORK COAT	112
PR656	SHORT SLEEVE CHEF'S JACKET	108
PR657	LONG SLEEVE CHEF'S JACKET	109
PR659	CHEF'S COOLMAX LONG SLEEVE JACKET	112
PR661	'CUISINE' CHEF'S JACKET	113
PR664	STUDDED FRONT SHORT SLEEVE CHEF'S JACKET	104
PR665	STUDDED FRONT LONG SLEEVE CHEF'S JACKET	104
PR668	CHEF'S SHORT SLEEVE 'CULINARY' PULL ON TUNIC	110
PR669	CHEF'S LONG SLEEVE 'CULINARY' PULL ON TUNIC	110
PR670	LADIES' SHORT SLEEVE CHEF'S JACKET	106
PR671	LADIES' LONG SLEEVE CHEF'S JACKET	106

CHEF'S T-SHIRT

PR649	COOLCHECKER CHEF'S T-SHIRT	115
-------	----------------------------	-----

CHEF'S TROUSERS

PR552	PULL ON CHEF'S TROUSER	117
PR553	ESSENTIAL CHEF'S TROUSER	117
PR554	CHEF'S SELECT TROUSER	117

CHEF'S ACCESSORIES

PR648	TURN-UP CHEF'S HAT	119
PR652	'CUISINE' CHEFS JACKET STUDS	119
PR653	CHEF'S SKULL CAP	118
PR654	CHEF'S SCARF	118
PR658	CHEF'S ZANDANA	118

CHEF'S APRONS

PR102	COTTON BIB APRON	122
PR110	STRIPED BIB APRON	123
PR125	JEANS STITCH DENIM WAIST APRON	124
PR126	JEANS STITCH DENIM BIB APRON	124
PR150	'COLOURS' BIB APRON	121
PR164	GASTRONOMY WAIST APRON	124
PR168	CLASSIC HALF STRIPE APRON	123

BEAUTY & HEALTH

BEAUTY TUNICS

PR681	'MIKA' FEATURE BUTTON TUNIC	132
PR682	'ORCHID' WRAP OVER TUNIC	129
PR683	'BLOSSOM' ASYMMETRIC BUTTON TUNIC	134
PR684	'PEONY' CONTRAST PANELLED TUNIC	137
PR686	'CAMELLIA' ZIP TUNIC	134
PR687	'LILY' CONTRAST TUNIC	134
PR690	'ROSE' WRAP SATIN TRIM TUNIC	130
PR691	'IVY' CONTRAST TUNIC	133
PR693	'EPSOM' MEN'S WRAP TUNIC	136

BEAUTY TROUSERS

PR536	'IRIS' SALON TROUSER	139
-------	----------------------	-----

TABARDS & APRONS

PR150	'COLOURS COLLECTION' BIB APRON	142
PR171	LADIES' POCKET TABARD	141
PR172	LADIES' LONG POCKET TABARD	141
PR176	CONTRAST TABARD	141
PR177	LADIES' 'TULIP' WRAP AROUND TUNIC	139

HEALTHCARE TUNICS

PR604	'VITALITY' HEALTHCARE TUNIC	145
PR605	'DAISY' HEALTHCARE TUNIC	143
PR609	'MALVERN' MEN'S HEALTH TUNIC	144

HEALTH CARE TROUSERS

PR514	'POPPY' HEALTHCARE TROUSERS	145
-------	-----------------------------	-----

INDEX





®

UNIFORMS THAT WORK FOR YOU

BUSINESSWEAR
HOSPITALITYWEAR
CHEFSWEAR
BEAUTYWEAR

